



For
Lease

**9,206 SF of Industrial / Retail
Space in Richmond**

5000 Minoru Boulevard
Richmond, BC

PROPERTY DETAILS




- 9,206 square feet of industrial / retail space available in Richmond City Centre
- Well situated in a rapidly developing area of Richmond with many new and proposed mixed-use projects in the surrounding area
- Two points of all-directional access and egress from Alderbridge Way
- Direct exposure along Alderbridge Way and proximity to No. 3 Road
- Ample surface parking

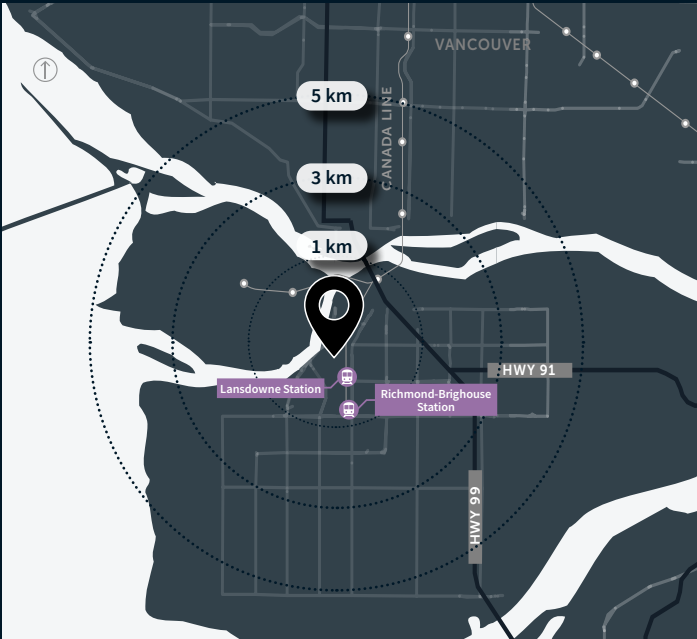
ZONING

IR1 - Industrial Retail
Provides for a range of general industrial uses, stand-alone offices and a limited range of retail uses.




BUILDING AREA

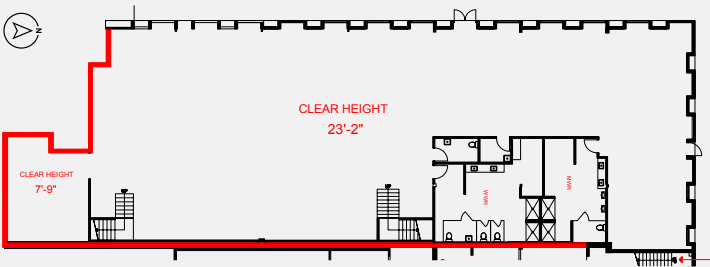
Main Floor	7,684 SF
Second Floor	1,522 SF
Total	9,206 SF

- **ASKING LEASE RATE:**
\$22.95 PSF Net
- **ADDITIONAL RENT:**
\$9.11 PSF + Management Fee
- **AVAILABILITY:**
September 1st, 2023



DEMOGRAPHICS

- **Population**
1 km: 13,526 3km: 104,594 5 km: 209,866
- **No. of Households**
1 km: 6,720 3km: 41,325 5 km: 78,816
- **Avg. Household Income**
1 km: \$60,616 3km: \$81,490 5 km: \$95,425



MAIN FLOOR



SECOND FLOOR





Jonathan Jassebi*

Vice President

+1 604 998 6141

jonathan.jassebi@jll.com

*Personal Real Estate Corporation



Casey Bell*

Executive Vice President

+1 604 998 6014

casey.bell@jll.com

*Personal Real Estate Corporation



Click/Scan to
view team listings



Metro Vancouver
Industrial Group



jll.ca

510 West Georgia Street, Suite 2150

Vancouver, BC V6B 0M3

Jones Lang LaSalle Real Estate Services, Inc.

