

FOR LEASE

UNITS

101, 110, 112-114

590 EBURY PLACE

DELTA, BC

Owned by

Beedie/

Managed by

  
CANREAL



## OPPORTUNITY

To lease 3,315 SF to 8,009 SF of warehouse and office space at 590 Ebury Place on Annacis Island. The building features dock and grade loading doors, ample parking, and provides excellent truck access and maneuvering.

Located just a 5-minute drive from the Alex Fraser Bridge and the Highway 91/South Fraser Perimeter Road Interchange, the property provides convenient access to all municipalities within Metro Vancouver.

## CONTACT

**KEEGAN MATHESON**

*Associate*

778 991 9406

[keegan.matheson@jll.com](mailto:keegan.matheson@jll.com)

**JONATHAN JASSEBI\***

*Vice President*

778 883 8667

[jonathan.jassebi@jll.com](mailto:jonathan.jassebi@jll.com)

**CASEY BELL\***

*Executive Vice President*

604 340 3173

[casey.bell@jll.com](mailto:casey.bell@jll.com)

\* Personal Real Estate Corporation



JLL  
2150-510 West Georgia Street  
Vancouver, BC V6B 0M3  
604 998 6001  
[www.jll.ca](http://www.jll.ca)

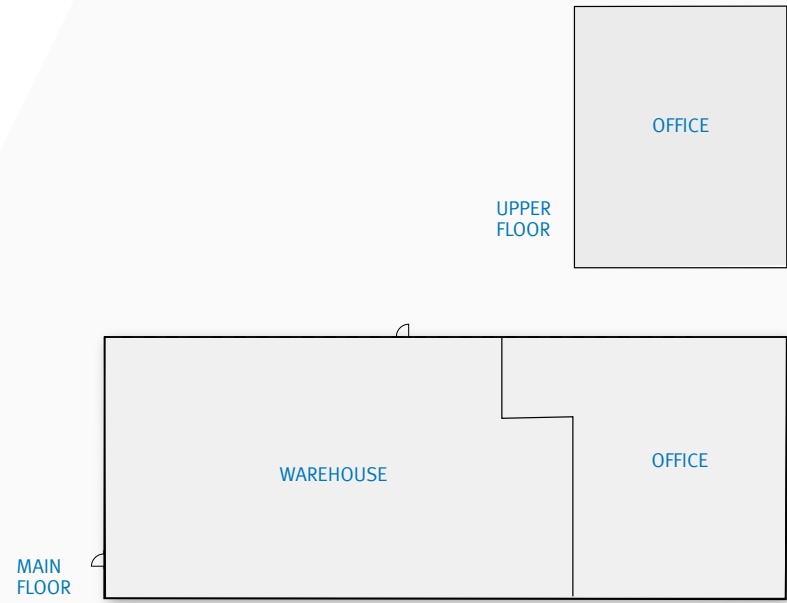
# MARKETING PLAN

## UNIT 101

MAIN FLOOR WAREHOUSE  
2,037 SF

OFFICE (ACROSS TWO LEVELS)  
1,525 SF

TOTAL SPACE  
3,562 SF



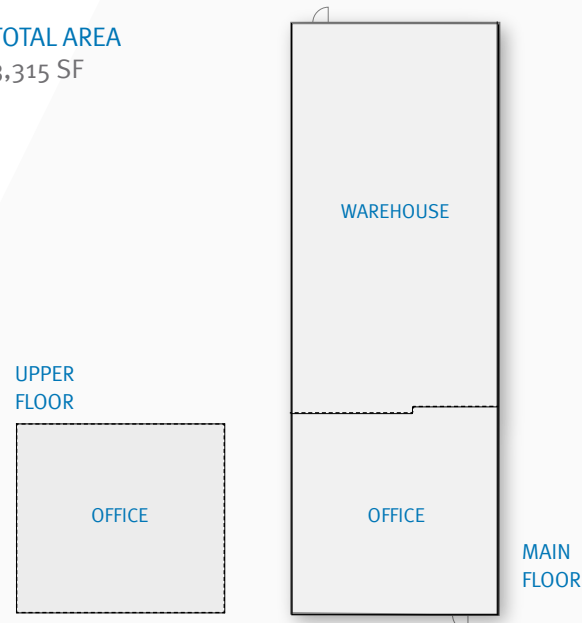
## UNIT 110

MAIN FLOOR WAREHOUSE/OFFICE  
2,416 SF

MEZZANINE AREA  
887 SF

COMMON AREA  
12 SF

TOTAL AREA  
3,315 SF

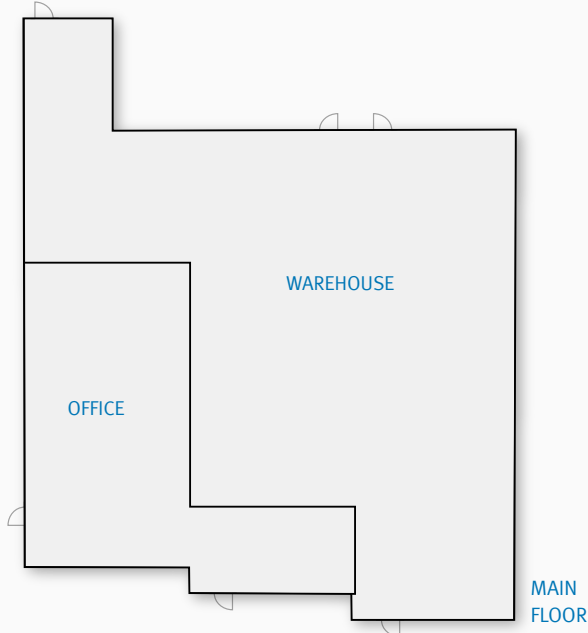


## UNITS 112-114

MAIN FLOOR WAREHOUSE/OFFICE  
7,980 SF

COMMON AREA  
29 SF

TOTAL SPACE  
8,009 SF



# 590 EBURY PLACE DELTA, BC



### AVAILABLE FOR OCCUPANCY

Unit 101: August 1, 2026  
Unit 110: Immediately  
Units 112-114: Immediately



**ADDITIONAL RENT (2026 ESTIMATE)**  
\$6.74 PSF plus 5% management fee



**BASIC RENT**  
\$18.00 PSF



**ZONING**  
I2: Medium impact industrial

## BUILDING FEATURES

- 21' clear ceiling height in warehouse
- Grade level loading
- 100 amps | 3 phase | 120/208 volts per unit
- Excellent truck access & maneuvering room
- Concrete tilt-up construction
- Fully sprinklered
- Ample parking
- Corporate appeal
- Professionally managed



# CONTACT

/

KEEGAN MATHESON

*Associate*

778 991 9406 / keegan.matheson@jll.com

JONATHAN JASSEBI\*

*Vice President*

778 883 8667 / jonathan.jassebi@jll.com

CASEY BELL\*

*Executive Vice President*

604 340 3173 / casey.bell@jll.com

\* Personal Real Estate Corporation

© 2026 Jones Lang LaSalle Real Estate Services, Inc. All rights reserved.  
All information contained herein is from sources deemed reliable; however,  
no representation or warranty is made to the accuracy thereof.



SEE A BRIGHTER WAY

2150-510 West Georgia Street

Vancouver, BC V6B 0M3

604 998 6001

[www.jll.ca](http://www.jll.ca)