

FOR LEASE

7451

Elmbridge Way
RICHMOND, British Columbia

Up to 22,412 SF of assembly, flex, office space



Jonathan Jassebi*
Vice President
+1 778 883 8667
jonathan.jassebi@jll.com
*Personal Real Estate Corporation

Casey Bell*
Executive Vice President
+1 604 340 3173
casey.bell@jll.com
*Personal Real Estate Corporation

Cam Bertsch
Senior Associate
+1 778 881 3235
cam.bertsch@jll.com



LOCATION

The subject property is situated at 7451 Elmbridge Way in Richmond. An exceptional location that combines prime accessibility and a vibrant community. The property benefits from its proximity to major transportation arteries, allowing for seamless connectivity throughout the region. With easy access to Highway 99 and 91 and well-connected transportation networks, this location provides convenient access to the broader Metro Vancouver area. Furthermore, the surrounding area offers a diverse range of amenities, including shopping centers, restaurants, and recreational facilities, ensuring that employees and visitors have access to everything they need within reach.

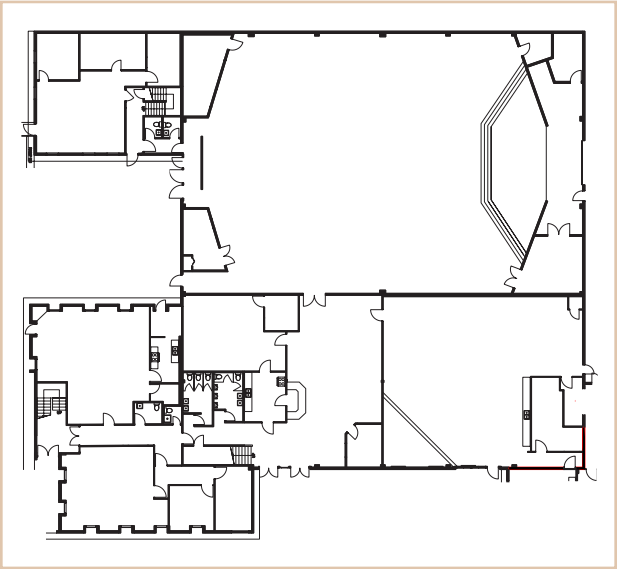
 **ASKING LEASE RATE**
\$22.95 PSF Net

 **ADDITIONAL RENT**
\$8.44 PSF

 **ZONING**
IR-1

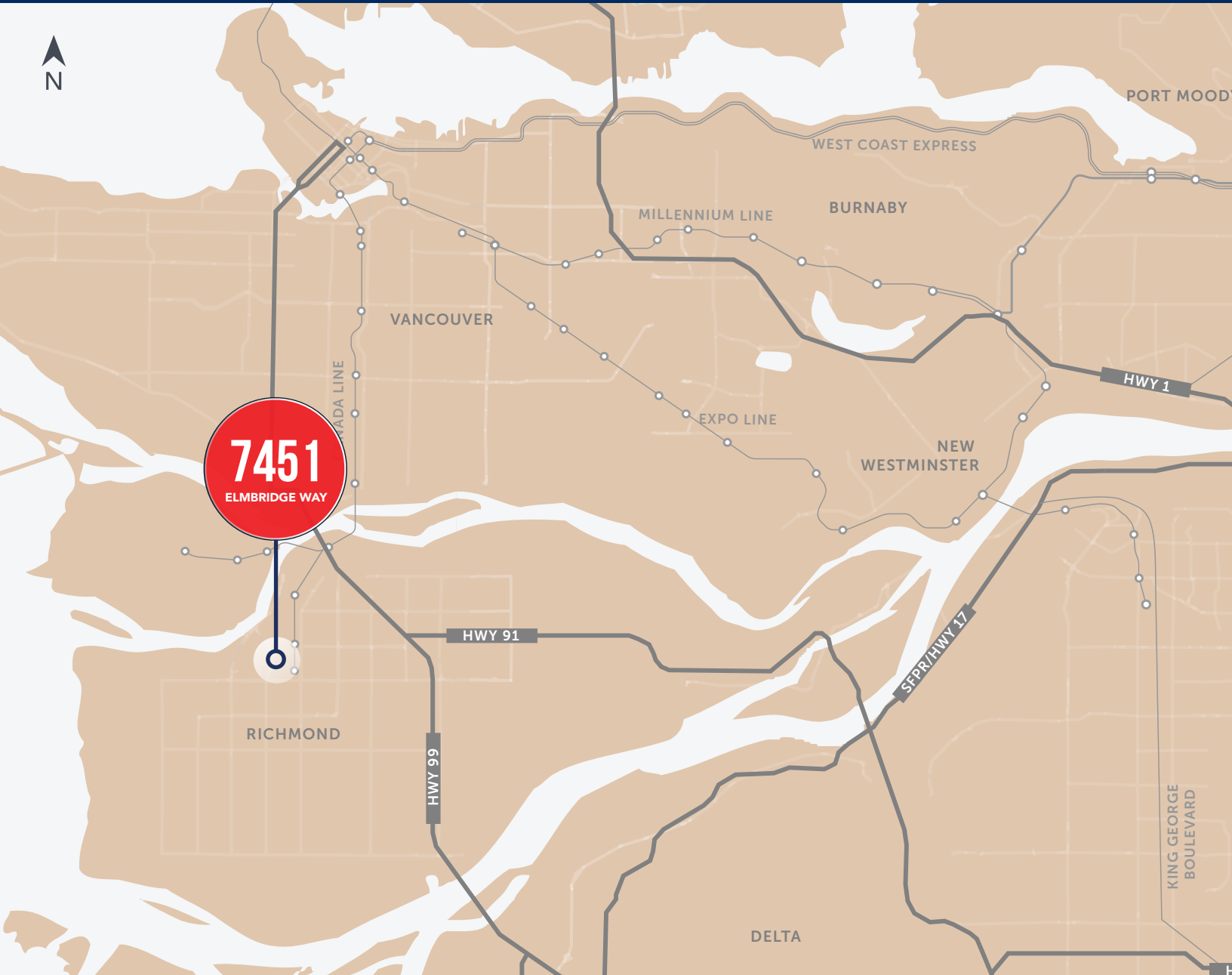
FLOOR PLAN

Total 22,412 SF



FEATURES

- ▶ Well situated in a rapidly developing area of Richmond with many new and proposed mixed-use projects in the surrounding area
- ▶ Previously used for church and bible schools
- ▶ Close proximity to various retail stores, restaurants, and outdoor parks
- ▶ Excellent connectivity with major transportation routes, including Hwy 99
- ▶ Ample surface parking
- ▶ Fully sprinklered
- ▶ Concrete tilt-up construction
- ▶ Gas fired unit heaters



FOR LEASE

7451

Elmbridge Way

RICHMOND, British Columbia



Jonathan Jassebi*

Vice President
+1 778 883 8667
jonathan.jassebi@jll.com

*Personal Real Estate Corporation

Casey Bell*

Executive Vice President
+1 604 340 3173
casey.bell@jll.com

*Personal Real Estate Corporation

Cam Bertsch

Senior Associate
+1 778 881 3235
cam.bertsch@jll.com