

207-209

# 19265

Airport Way  
Pitt Meadows

MARKETED BY



DEVELOPED BY



FOR LEASE

**59,155 SF WAREHOUSE  
AND OFFICE SPACE**



**BRUNO FIORVENTO\***

Executive Vice President

+1 604 998 6006

[bruno.fiorvento@jll.com](mailto:bruno.fiorvento@jll.com)

**MIKE THOMPSON\***

Executive Vice President

+1 604 809 5836

[mike.thompson@jll.com](mailto:mike.thompson@jll.com)

**KEEGAN MATHESON**

Sales Associate

+1 778 991 9406

[keegan.matheson@jll.com](mailto:keegan.matheson@jll.com)

\*Personal Real Estate Corporation

# The Opportunity

Opportunity to lease 59,155 SF of high quality ground floor warehouse and office space in Golden Ears Business Park. Constructed in 2022 by industry-leading developer Onni; the building features an efficient design, top tier loading and floor load capacity within the professionally managed complex.

**LEASE RATE**  
\$18.95 PSF

**ESTIMATED OPERATING COSTS\***  
\$4.99 PSF  
\*Does not include management fee

**BUILDING AREA**  
59,155 SF

**ZONING**  
I-3 Light Industrial Business Park



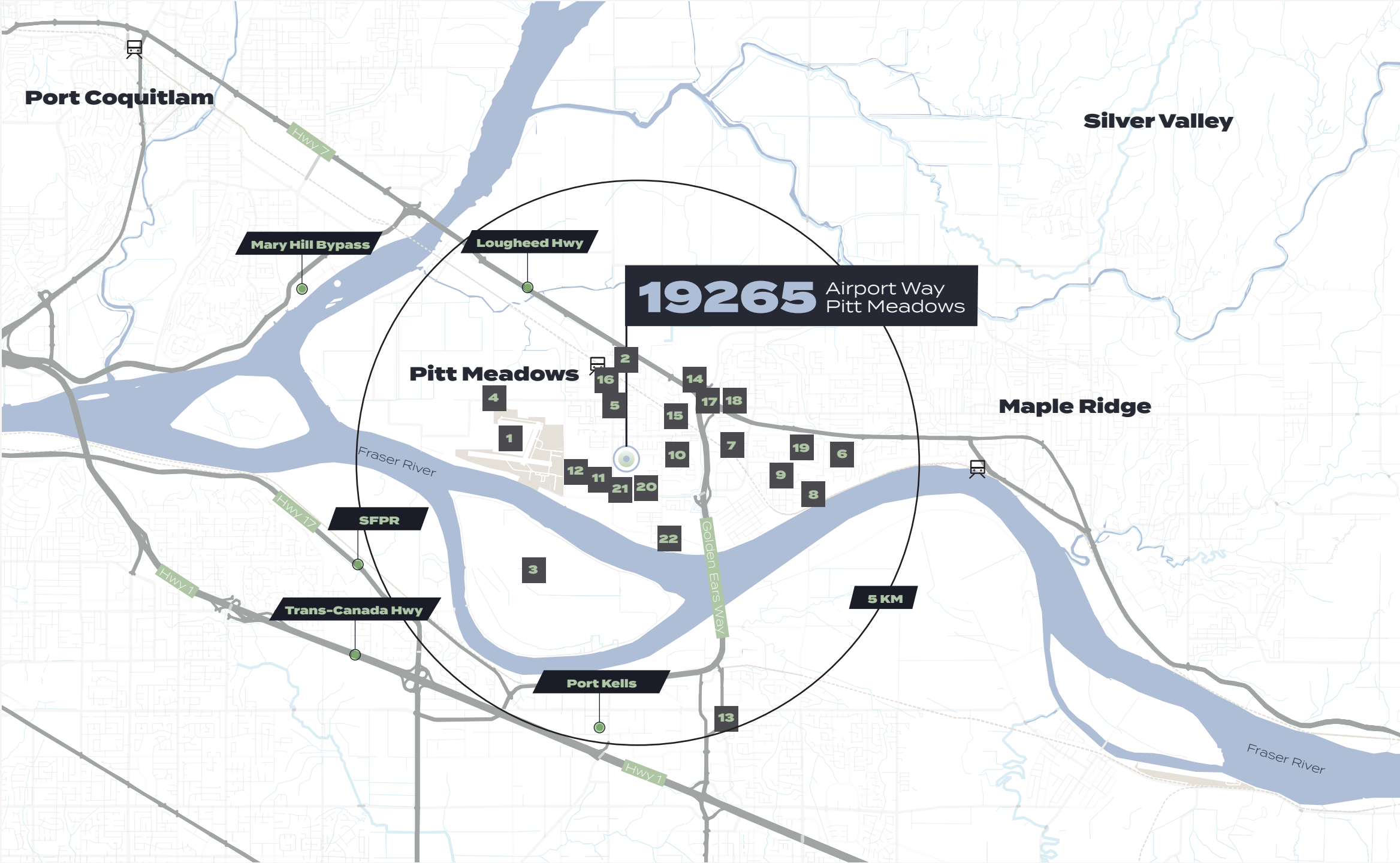
## 207-209 - 19265 AIRPORT WAY, PITT MEADOWS

	Clear Height	32' clear
	Loading	Nine (9) dock doors Three (3) grade doors
	Lighting	LED
	Power	3-phase 100 amps at 600 volts per unit
	Sprinklers	ESFR
	Heaters	Gas Fired
	Levelers	40,000 lb hydraulic levelers on dock doors
	Floor Load	700 lbs/SF capacity
	Construction	Concrete Tilt up
	Office Space	Professionally finished office



# Location Overview

The property is well located within minutes of the Trans-Canada Highway, Lougheed Highway and South Perimeter Road and an abundance of amenities in the area. The central location, convenient highway access and proximity to other industrial nodes makes Golden Ears Business Park an ideal home for distribution companies and industrial users servicing Greater Vancouver.

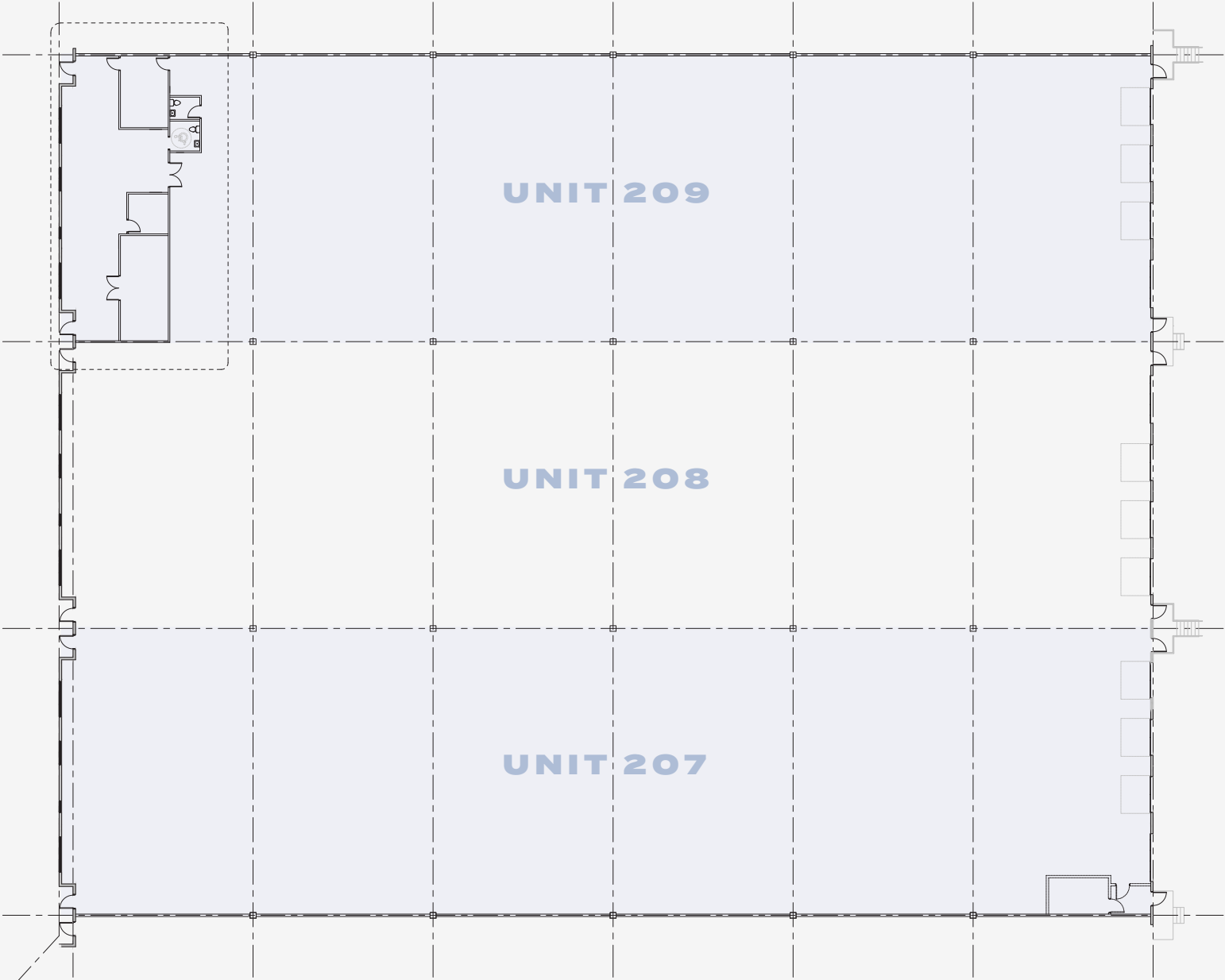


- |    |                                       |
|----|---------------------------------------|
| 1  | Pitt Meadows Regional Airport         |
| 2  | Harris Road Park                      |
| 3  | Barnston Island                       |
| 4  | Canadian Aviation College             |
| 5  | Pitt Meadows Family Recreation Centre |
| 6  | Ridge Meadows Hospital                |
| 7  | Triple Tree Nurseryland               |
| 8  | Maple Ridge Golf Course               |
| 9  | Hammond Stadium                       |
| 10 | Pitt Meadows Arena Complex            |
| 11 | PartSource Commercial Hub             |
| 12 | Golden Ears Business Park             |
| 13 | Cineplex Cinemas Langley              |
| 14 | Meadow Gardens Golf Club              |
| 15 | Joe Fresh                             |
| 16 | 7-Eleven                              |
| 17 | Staples                               |
| 18 | Tim Hortons                           |
| 19 | RONA Maple Ridge                      |
| 20 | Go Grill Pitt Meadows                 |
| 21 | C Market Coffee                       |
| 22 | Stomping Grounds Cafe & Bistro        |



**FLOOR PLAN**  
19265 Airport Way, Pitt Meadows

<b>TOTAL AREA</b> 59,155 SF
<b>WAREHOUSE AREA</b> 57,145 SF
<b>BUILT OUT OFFICE</b> 2,010 SF



\*Possibility to demise 39,615 SF













207-209

**19265** Airport Way  
Pitt Meadows

**BRUNO FIORVENTO\***

Executive Vice President

+1 604 998 6006

bruno.fiorvento@jll.com

**MIKE THOMPSON\***

Executive Vice President

+1 604 809 5836

mike.thompson@jll.com

**KEEGAN MATHESON**

Sales Associate

+1 778 991 9406

keegan.matheson@jll.com

\*Personal Real Estate Corporation

© 2025 Jones Lang LaSalle Real Estate Services, Inc. All rights reserved. Information set out herein (the "Information") has not been verified by Jones Lang LaSalle Real Estate Services, Inc., Brokerage and any and all of its real estate agents/staff, and to all other divisions of the company (collectively "JLL"). JLL does not represent, warrant or guarantee the accuracy, correctness and completeness of the Information. Given the limitations of the investigations, inquiries and verification that JLL have undertaken, the reliability of this Information must be treated with a suitable degree of caution and neither JLL or any of their affiliates accept any liability or responsibility for the accuracy or completeness of the information contained herein and no reliance should be placed on the information contained in this document. JLL does not accept or assume any responsibility or liability, direct or consequential, for the Information or the recipient's reliance upon the Information. The recipient of the Information should take such steps as the recipient may deem necessary to verify the Information prior to placing any reliance upon the Information. The Information may change and any property described in the Information may be withdrawn from the market at any time without notice or obligation to the recipient from JLL.

