 **JLL** SEE A BRIGHTER WAY

For sublease

#610 - 13211 Delf Place, Richmond

11,840 sf up to 24,950 sf of office and warehouse space
with dock loading

#610 - 13211 Delf Place / Richmond

Location information

Located in Richmond's thriving Crestwood Industrial District, the sought-after Knightsbridge Business Park stands just south of the Cambie Road/Jacombs Road intersection with quick access to Knight Street, Hwy 99 and Hwy 91.

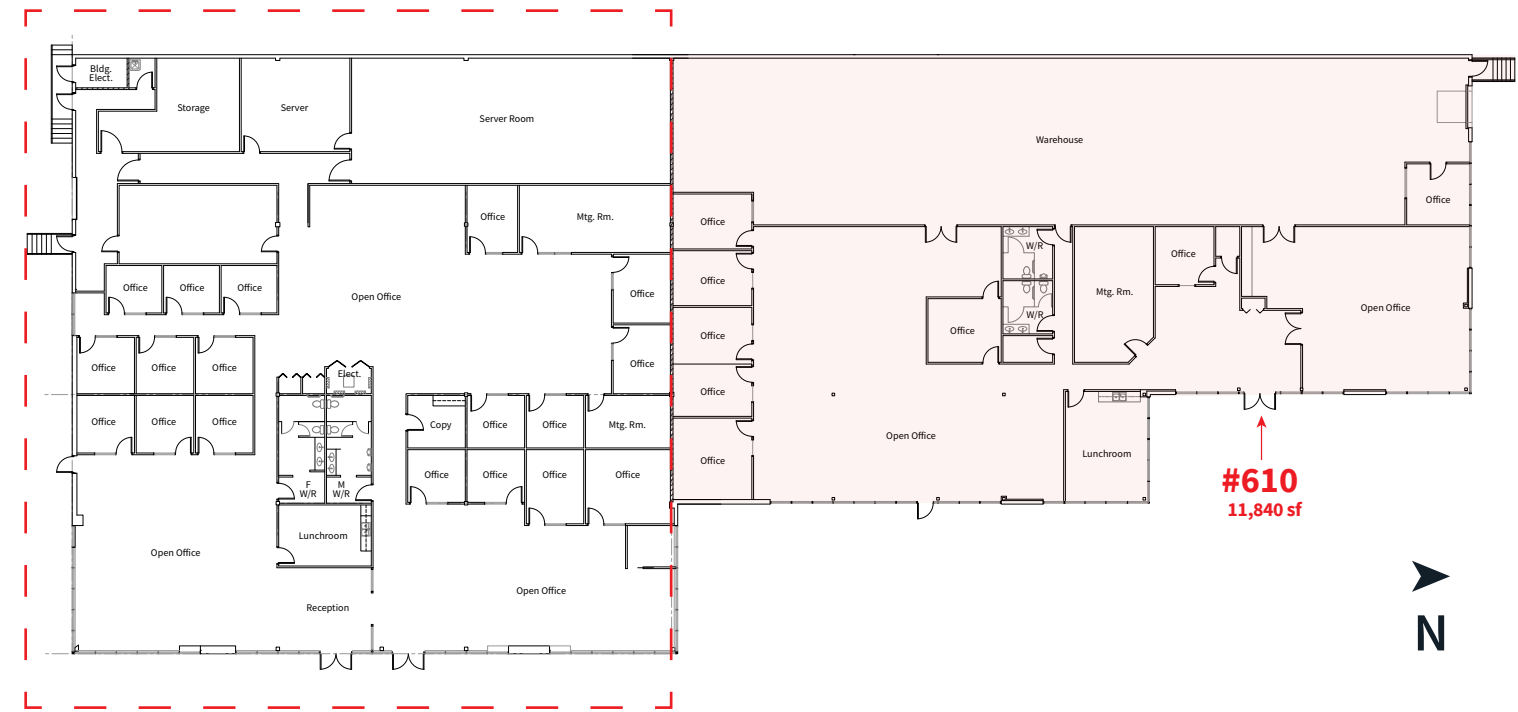
Premise details

- Available Area: 11,840 sf up to 24,950 sf
- Asking net lease rate: \$20.00 psf/pa
- Additional rent: \$7.54 psf
- Sublease term expiry: September 30, 2034
- Clear heights: Two zones - 14'/18'
- Availability: Immediate
- Signage opportunity
- Ample parking
- One dock door
- IB1 Zoning



#610 - 13211 Delf Place / Richmond

#610 - 13211 Delf Place, Richmond



Expansion opportunity of 13,110 sf is available, providing 24,950 sf of contiguous space



Drive times:

36 minutes

CAN/US Border

32 minutes

Downtown Vancouver

5 minutes

Highway 91

5 minutes

Highway 99

19 minutes

YVR



Cam Bertsch*

Associate Vice President

cam.bertsch@jll.com

+1 604 998 6053

*Personal Real Estate Corporation

Stefan Morissette*

Senior Vice President

stefan.morissette@jll.com

+1 604 657 0801

*Personal Real Estate Corporation

Although information has been obtained from sources deemed reliable, JLL does not make any guarantees, warranties or representations, express or implied, as to the completeness or accuracy as to the information contained herein. Any projections, opinions, assumptions or estimates used are for example only. There may be differences between projected and actual results, and those differences may be material. JLL does not accept any liability for any loss or damage suffered by any party resulting from reliance on this information. If the recipient of this information has signed a confidentiality agreement with JLL regarding this matter, this information is subject to the terms of that agreement. ©2025 Jones Lang LaSalle Brokerage, Inc. All rights reserved.