

# 638-706 Derwent Way

DELTA, BC

FOR LEASE

Multiple warehouse/office units available  
ranging from 6,731 SF to 6,878 SF



**JONATHAN JASSEBI\***

Vice President  
+1 (778) 883 8667  
Jonathan.Jassebi@jll.com

**BRUNO FIORVENTO\***

Executive Vice President  
+1 (604) 551 1863  
Bruno.Fiorvento@jll.com

\*Personal Real Estate Corporation



# OVERVIEW

The subject property is conveniently located on Derwent Way within Annacis Business Park. Annacis Island is centrally located and accessible to most areas of the Lower Mainland, with Highway 91 providing easy access to Burnaby, New Westminister, Delta, Surrey and the Canadian/US border.



## Asking net rental rate:

Contact listing agents



## Operating expenses:

\$6.65 PSF approx. (2026 est.)



## Loading:

1 grade door per unit



## Ceiling height:

12' clear

## BUILDING FEATURES

- ▶ Full sprinkler system
- ▶ Grade level loading
- ▶ Designated loading/parking per bay
- ▶ Men's and women's individual private washrooms
- ▶ Quality office improvements
- ▶ Heavy 3-phase power (200 amp/480-600 volts)

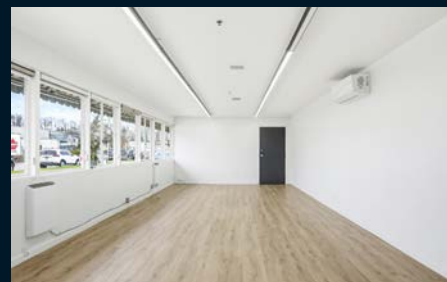


# FLOOR PLAN



## 638-703 Derwent Way

UNIT	SF	AVAILABILITY
660	6,731 SF	Immediately
690	6,731 SF	Immediately
694	6,878 SF	Immediately

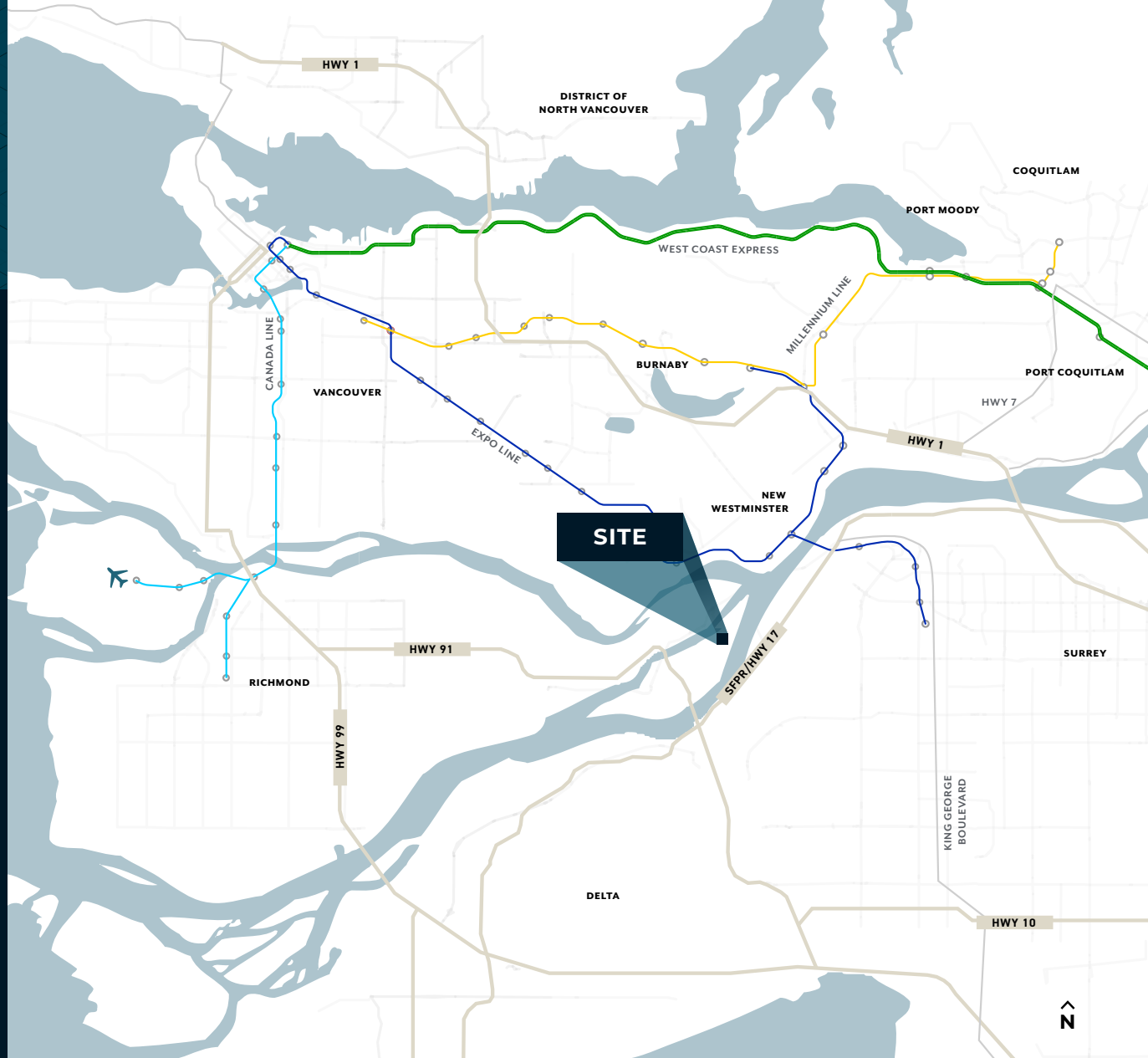


# 638-703 Derwent Way

DELTA, BC

## DRIVE TIMES

HIGHWAY 91	5 min
VANCOUVER INTL. AIRPORT	25 min
DELTA PORT	35 min
TSAWWASSEN FERRY TERMINAL	30 min
CANADA/US BORDER	35 min
DOWNTOWN VANCOUVER	40 min



Although information contained herein has been obtained from sources deemed reliable, the owner, Jones Lang LaSalle Real Estate Services, Inc. ("JLL Canada"), and/or their representatives, brokers or agents make no guarantees as to the accuracy of the information contained herein, and offer the property/portfolio without express or implied warranties of any kind. The property/portfolio may be withdrawn without notice. If the recipient of this information has signed a confidentiality agreement regarding this matter, this information is subject to the terms of that agreement. © Copyright 2026 Jones Lang LaSalle IP, Inc. All rights reserved. jll.com

\*Personal Real Estate Corporation



**JONATHAN JASSEBI\***

Vice President  
+1 (778) 883 8667  
Jonathan.Jassebi@jll.com



**BRUNO FIORVENTO\***

Executive Vice President  
+1 (604) 551 1863  
Bruno.Fiorvento@jll.com